

Monarch® 9854™ Tabletop Bar Code Printer

Monarch®
Products and Services

Versatile Printing

Bar code errors result in shipping delays and costly fines. Inefficient tracking means mistakes and slowdowns. Coordinating labeling internationally can be a headache. The Monarch® 9854™ Tabletop Bar Code Printer solves these issues and more, helping you move your merchandise quickly and accurately through the supply chain.

- Print high quality labels
- Compact flash card can hold thousands of formats
- Rugged, quiet industrial design
- Up to 4.72" supply width
- Wide variety of communication interfaces
- Very fast throughput (no waiting for labels to print)

Clear, Crisp Bar Codes

Prints a wide variety of bar codes, including postcode, coda block, ITF and RSS as well as all basic bar code symbologies.

The Monarch 9854 printer prints especially crisp, high quality characters utilizing small fonts and provides for a wide variety of styles.

This versatile printer also includes native support of standard graphic formats.

Stay Connected

Standard connectivity includes wired ethernet, one USB port, serial port, parallel port and PS2 keyboard port.



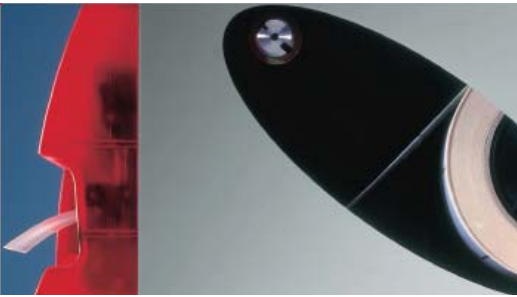
Monarch® 9854™ Tabletop Bar Code Printer

Monarch®
Products and Services

Increase Productivity

Increase your productivity with the Monarch 9854 Tabletop Printer:

- Quick Printing! Super fast 150 MHz processor and print speeds up to 8 ips.
- Decrease Downtime! Fast, easy and intuitive supply loading.
- User replaceable printhead.



- Real time clock built in to allow for date/time stamps.
- Secure off-line operation -store formats on removable compact flash card.

Companion Products

- Foot switch for controlling on-demand mode
- Mini keyboard for off-line data entry
- Compact flash expanded

memory card for formats, fonts and/or graphics.

- The Cutter 2000 attaches to the front of the printer to allow for tags to be cut on demand.

Free Software

A free starter edition of NiceLabel software is shipped with each printer!

Features and Specs at a Glance

- Thermal Direct or Thermal Transfer
- On-demand or Continuous
- Prints Tags or Labels
- Operates On-line or Off-line
- Enhanced Print Quality
- Prints up to 8 ips
- Optional 300 dpi Printing

Dimensions: Height – 10.7" (272 mm)
Width – 10.2" (260 mm) Depth – 18.2" (462 mm)
Weight – 30.8 lbs. (14 kg)

Printing Method: Thermal Direct or Thermal Transfer

Hardware Highlights: Processor: 32-Bit, 150 MHz RAM: 16 MB; Flash: 2 MB; Display: 2-Line, 16 character graphic; Frame: Steel/Die-cast base plate; Cover: Steel & red plastic; Protective Equipment: IP 41; Operating Temperature: 41° to 104° degrees (488° C); Supply Voltage: 100-240 V; Acoustic Spec.: 70 dBA

Print Characteristics: Max. Image: 4.1" x 39.95" (104 x 1000 mm); Resolution: 203 dpi or 300 dpi;

Operator Replaceable Printhead; Max. Print Speed: 8.0 ips (6 ips w/300 dpi); Fonts: 17 + 3 scalable; Barcodes: 17 1D and 5 2D, RSS, CC; Graphics: BMP, PCX, TIF, GIF, JPG; Continuous/On Demand

Supply Label/Tag: Width 0.5" to 4.72" (12-120 mm); Length max. 39.4" (1000 mm); ID: 1.5", 3" 4" Standard; (38.1, 76.2, 101.6 mm; OD: 7.48" (210 mm); Thickness: 4-10 mil; Sensing: Transmissive. Reflective Optional; Ribbon Length: 6.6' (500 m)

Interface: Menu Languages: 7; Ports: Serial (115,200), USB, parallel, PS 2, Ethernet, CF, peripheral; Data Language: Easy Plug; Certifications: CE, GS, TUV, FCC, NRTL-US, CAN/CSA, CCC, GOST

Monarch® Supplies: For smooth and reliable performance, only Monarch supplies are recommended for use with Monarch printers. Our labels scan virtually 100% of the time, cutting wasted rescanning and labeling time.

Monarch® Service: Every Monarch printer is fully supported by Monarch Service, the largest network of experienced, full-time bar code and RFID technicians in the industry.

Avery Dennison Printer Systems Division

170 Monarch Lane Miamisburg, OH 45342

1.800.543.6650 Monday-Friday, 8 AM–6:30 PM ET www.monarch.com

